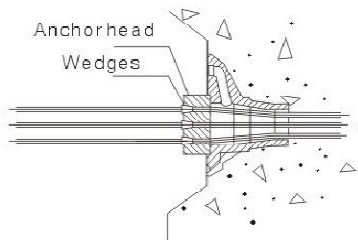
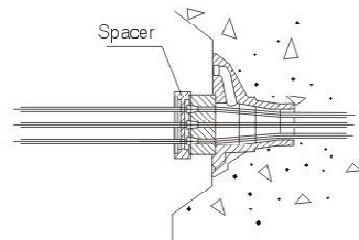




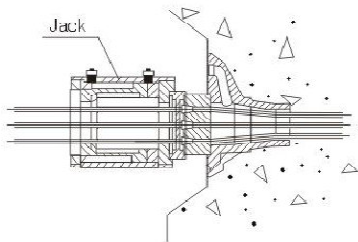
# INSTALLATION and STRESSING



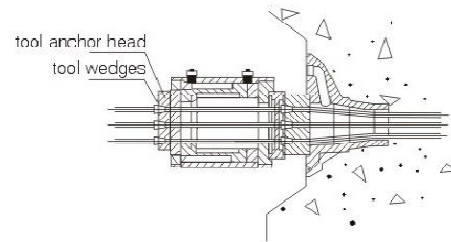
Step 1: Installation of anchor head and wedges



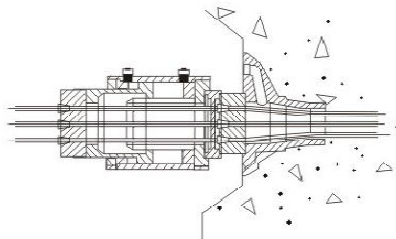
Step 2: Installation of spacer



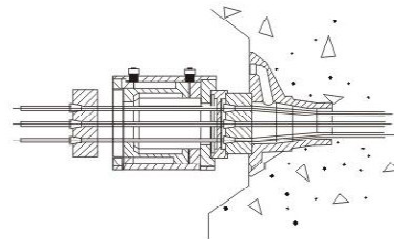
Step 3: Installation of jack



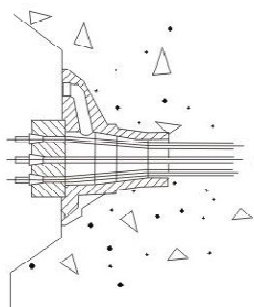
Step 4: Installation of tool anchor head and tool wedges



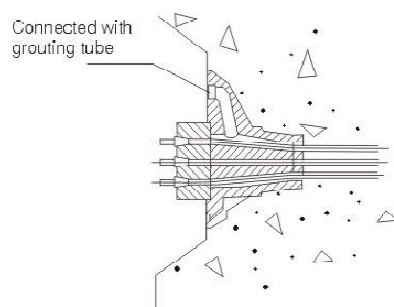
Step 5: stressing



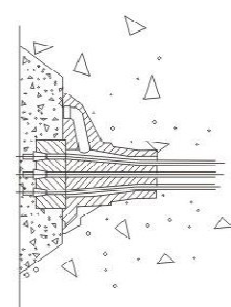
Step 6: Piston returning and anchoring



Step 7: Removal of equipment and cutting of extra strand



Step 8: Grouting



Step 9: Anchorage Sealing